



3 Bedrooms

End Terraced House

Located in Chineham

Guide Price £460,000



basingstoke@collins-
residential.co.uk

www.collins-residential.co.uk

01256 224597



24 Doric Avenue Chineham RG24 8NW



COLLINS RESIDENTIAL are delighted to offer this well presented three bed-roomed end terraced home, located on the popular Vyne Park development. Further benefits include, lounge, luxury fitted kitchen-dining room with built in appliances, cloakroom, en-suite, front and rear gardens, garage and private driveway parking.



24 Doric Avenue

£460,000 Freehold

THREE BED-ROOMS

EN-SUITE TO MASTER

LOUNGE WITH BAY WINDOW

LUXURY FITTED KITCHEN-DINING ROOM



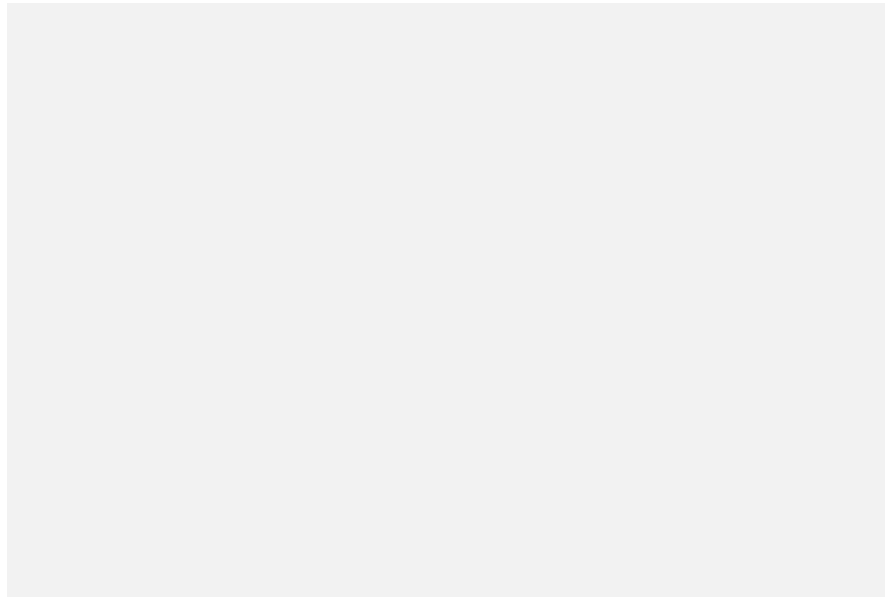
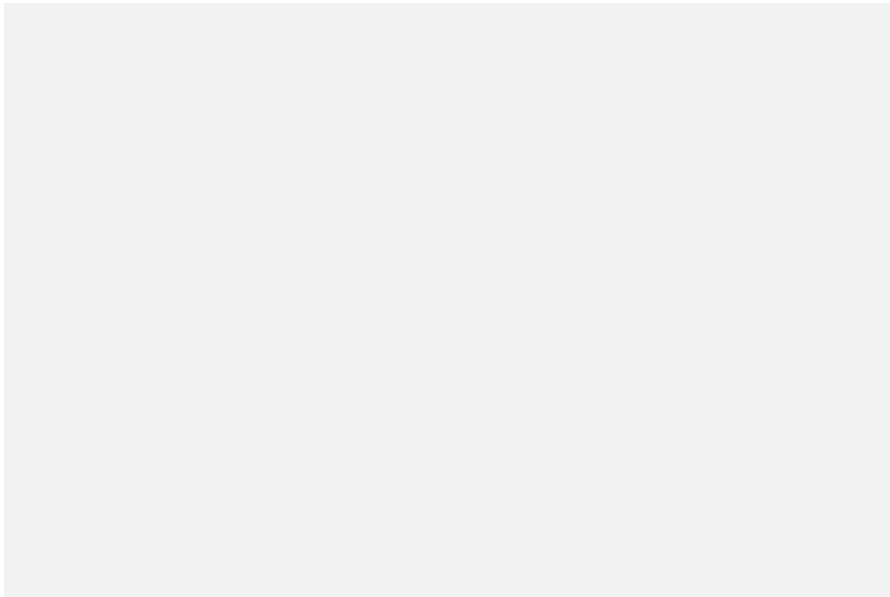
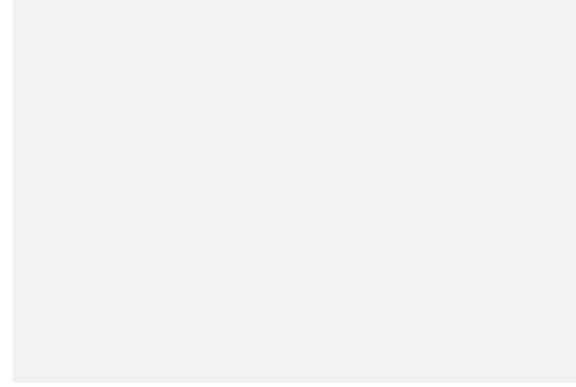
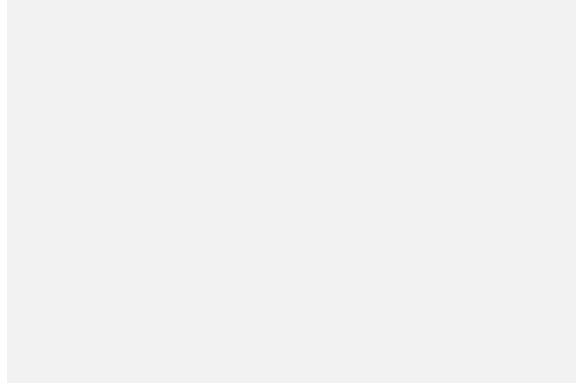
CLOAKROOM

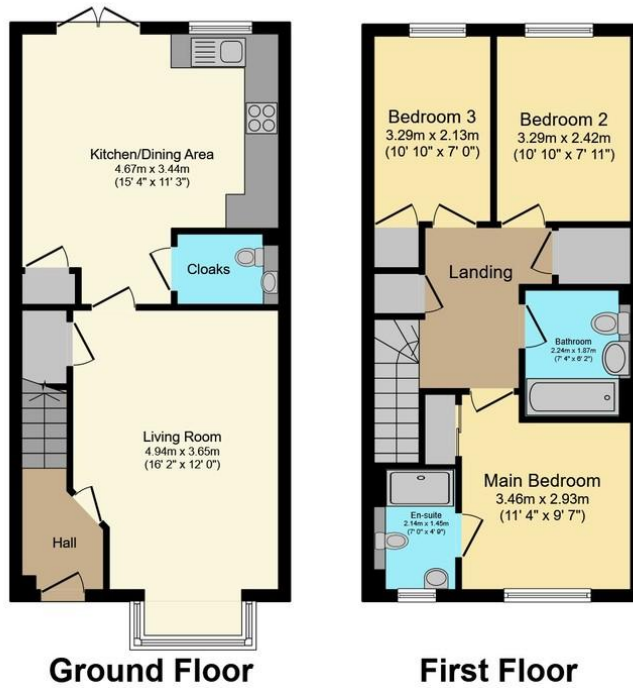
LOW MAINTENANCE REAR GARDEN

INTEGRAL GARAGE

GENEROUS SIZED REAR GARDEN







Total floor area 90.8 sq.m. (977 sq.ft.) approx

Council Tax Band : D

Agents Note: Whilst every care has been taken to prepare these particulars, they are for guidance purposes only. All measurements are approximate and are for general guidance purposes only and whilst every care has been taken to ensure their accuracy, they should not be relied upon and potential buyers/tenants are advised to recheck the measurements.

%epcGraph_c_1_285%

Unit 10, Basepoint Enterprise Centre,
Stroudley Road

basingstoke@collins-
residential.co.uk

www.collins-residential.co.uk

01256 224597
